





Baseline exclusive #breastfeeding @6mo: Ethiopia 72% Bangladesh 50% Vietnam 19% #MiamiABM

05-Nov-11 19:57 | BFMedicine



Jean Baker: Ethiopia has highest levels of childhood growth stunting, Bangladesh close 2nd (56% & 51%) #MiamiABM

05-Nov-11 19:56 | MilkWhisperer



Baseline stunting: Ethiopia 56%, Bangladesh 51%, Vietnam 24% #MiamiABM

05-Nov-11 19:56 | BFMedicine



A&T campaign extending reach through partnerships <http://t.co/fhHgFUMM> #breastfeeding #MiamiABM

05-Nov-11 19:55 | BFMedicine



Jean Baker: Partnerships with governments, health ministries, NGO's etc are crucial for health in developing nations #MiamiABM

05-Nov-11 19:55 | MilkWhisperer



Alive and Thrive : avert 10.7 million disability-life yrs w/ #breastfeeding support <http://t.co/AICsONms> #MiamiABM

05-Nov-11 19:54 | BFMedicine



Jean Baker: "Front Line Workers" are those who are working hands on with families, delivering health care #MiamiABM

05-Nov-11 19:53 | MilkWhisperer



RT @milkwhisperer: Jean Baker: In many developing nations, stunted growth in childhood is perceived as normal =( #MiamiABM

05-Nov-11 19:53 | mominisrael



Jean Baker: See what they are doing to improve health outcomes in children! <http://t.co/Zb2exwiD> #MiamiABM

05-Nov-11 19:52 | MilkWhisperer



Suboptimal #breastfeeding causes 1.4 million deaths each year <http://t.co/iVef8ZWE> #MiamiABM

05-Nov-11 19:51 | BFMedicine



First 1000 days is window to provide nutrition, prevent stunting #breastfeeding #MiamiABM

05-Nov-11 19:48 | BFMedicine



Jean Baker: In many developing nations, stunted growth in childhood is perceived as normal =( #MiamiABM

05-Nov-11 19:47 | MilkWhisperer



Jean Baker: \*Arrive and Thrive\* campaign in Viet, Bang & Ethiopia speaking now #MiamiABM

05-Nov-11 19:46 | MilkWhisperer



Funded by Gates foundation as catalyst for global focus on infant & young child feeding #MiamiABM

05-Nov-11 19:44 | BFMedicine



Alive & Thrive aims to increase # of infants exclusively breastfed 6 mo by 1.5 million #MiamiABM <http://t.co/3bYzzkES>

05-Nov-11 19:44 | BFMedicine



Meadowcroft: Change is hard, and it takes time. We are all incredibly impatient for change to happen. #MiamiABM

05-Nov-11 18:55 | BFMedicine



If only one bed net, need culturally sensitive approach to protect mom from malaria #MiamiABM

05-Nov-11 18:54 | BFMedicine



In Busia, after 3 months of pregnancy, cultural practice not to sleep in same bed as husband #MiamiABM

05-Nov-11 18:53 | BFMedicine



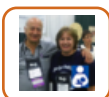
RT @MilkWhisperer: Dr.L.Meadowcroft: When you empower health workers with knowledge, you improve the lives of whole communities #MiamiABM

05-Nov-11 18:51 | TheEmpressMama



RT @MilkWhisperer: Dr.L.Meadowcroft: Skilled health care workers DO make a difference for women, families, communities #MiamiABM

05-Nov-11 18:50 | TheEmpressMama



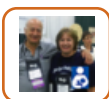
RT @BFMedicine: What's needed: training of health workers to understand what to tell families #MiamiABM #breastfeeding

05-Nov-11 18:48 | sherrycnm



Dr.L.Meadowcroft: When you empower health workers with knowledge, you improve the lives of whole communities #MiamiABM

05-Nov-11 18:48 | MilkWhisperer



RT @BFMedicine: Where 80% of people live, least access to care <http://t.co/67PxnnVX> MiamiABM

05-Nov-11 18:48 | sherrycnm



Dr.L.Meadowcroft: Skilled health care workers DO make a difference for women, families, communities #MiamiABM

05-Nov-11 18:48 | MilkWhisperer



Dr.L.Meadowcroft: African women may not access health care b/c they do not see the 'need' #MiamiABM

05-Nov-11 18:47 | MilkWhisperer



Before intervention, one mother asked midwife a question & was slapped #MiamiABM #breastfeeding

05-Nov-11 18:46 | BFMedicine



Dr.L.Meadowcroft: Paraphrase: Malnourishment of African women may not affect milk quality, but it does affect milk QUANTITY #MiamiABM

05-Nov-11 18:44 | MilkWhisperer



What's needed: training of health workers to understand what to tell families #MiamiABM #breastfeeding

05-Nov-11 18:44 | BFMedicine



Challenge for #breastfeeding in Subsaharan African - early cessation, introduction of non-nutritious foods #MiamiABM

05-Nov-11 18:43 | BFMedicine



Dr.L.Meadowcroft: #breastfeeding in sub-saharan Africa - 34% EBF till 6 months #MiamiABM

05-Nov-11 18:43 | MilkWhisperer



Dr.L.Meadowcraft: Lack of access to clean water affects OVERALL health for those in developing countries #MiamiABM

05-Nov-11 18:36 | MilkWhisperer



Dr.L.Meadowcraft: Improve lives of communities= Improvement for societies! #MiamiABM

05-Nov-11 18:35 | MilkWhisperer



Dr.L.Meadowcraft: Improve lives of women=improvement for her family. Improve lives of family=improvement for community. >> #MiamiABM

05-Nov-11 18:34 | MilkWhisperer



Dr.L.Meadowcraft: Working with the most vulnerable members of society: Women and Children - they have the least 'voice'. #MiamiABM

05-Nov-11 18:34 | MilkWhisperer



AMREF works in 30 countries in Africa through lens of women, girls and children <http://t.co/rW2JDQ1x> #MiamiABM

05-Nov-11 18:33 | BFMedicine



"@MilkWhisperer: Dr. L. Meadowcraft "Healthy Women/Babies-Integrated Health Programs to Improves African Lives" speaking next at #MiamiABM"

05-Nov-11 18:33 | purelovebabies



RT @MilkWhisperer: Dr. L. Meadowcraft "Healthy Women/Babies-Integrated Health Programs to Improves African Lives" speaking next at #MiamiABM

05-Nov-11 18:32 | purelovebabies



AMREF is committed to Better Maternal Health in Africa <http://t.co/eS0DC9EB> #MiamiABM

05-Nov-11 18:32 | BFMedicine



RT @astuebe: @BFMedicine @MilkWhisperer: economic strain linked with intimate partner violence #MiamiABM <http://t.co/ASfBhHs1>

05-Nov-11 18:30 | SofritoGringo



RT @BFMedicine: Lots of research on how to implement IPV screening in health care #MiamiABM

05-Nov-11 18:30 | as3pram



Next speaker: Lisa Meadowcraft, executive director of AMREF <http://t.co/7klb1FAT> #breastfeeding #MiamiABM

05-Nov-11 18:30 | BFMedicine



Dr. L. Meadowcraft "Healthy Women/Babies-Integrated Health Programs to Improves African Lives" speaking next at #MiamiABM

05-Nov-11 18:29 | MilkWhisperer



RT @astuebe: @BFMedicine @MilkWhisperer: economic strain linked with intimate partner violence #MiamiABM <http://t.co/ASfBhHs1>

05-Nov-11 18:28 | BFMedicine



Dr. Nancy Chin: In certain cultures new mothers experience violence/control via extended family members, not always from men! #MiamiABM

05-Nov-11 18:26 | MilkWhisperer



@BFMedicine @MilkWhisperer: economic strain linked with intimate partner violence #MiamiABM <http://t.co/ASfBhHs1>

05-Nov-11 18:26 | astuebe



Dr. Nancy Chin: Audience comment - violence against #breastfeeding mothers much more than a #breastfeeding issue, women need >> #MiamiABM

05-Nov-11 18:23 | MilkWhisperer



Lots of research on how to implement IPV screening in health care #MiamiABM

05-Nov-11 18:20 | BFMedicine



@EatingForMe @Stephenieeee Doctors here at #MiamiABM promote building PRENATAL stores, say can't wait till after birth... too late!

05-Nov-11 18:20 | MilkWhisperer



Amazed how many women sought help when right questions were asked #MiamiABM

05-Nov-11 18:16 | BFMedicine



Dr. Nancy Chin: Comment from audience - mothers are very secretive (read: Shamed!) about violence/control in their homes #MiamiABM

05-Nov-11 18:15 | MilkWhisperer



Dr. Nancy Chin: Comment from audience - perhaps a through questionnaire like with #ppd is required for screening #MiamiABM

05-Nov-11 18:14 | MilkWhisperer



Dr. Nancy Chin:>>that other health care professionals cannot see in a clinic setting #MiamiABM

05-Nov-11 18:13 | MilkWhisperer



Dr. Nancy Chin: <<As a private practice LC doing home visits, I (MilkWhisperer) am able to see & determine relational inequality >>#MiamiABM

05-Nov-11 18:13 | MilkWhisperer



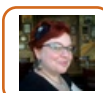
RT @HygeiaBaby: Fascinating! RT @BFMedicine: Delaying bath to 12h postpartum increased exclusive #breastfeeding #MiamiABM <http://t.co/qFR7MyHf>

05-Nov-11 18:12 | bfdboobies



Dr. Nancy Chin: Is violence against #breastfeeding mothers an area that need further study? >> #MiamiABM

05-Nov-11 18:12 | MilkWhisperer



RT @HygeiaBaby: Fascinating! RT @BFMedicine: Delaying bath to 12h postpartum increased exclusive #breastfeeding #MiamiABM <http://t.co/qFR7MyHf>

05-Nov-11 18:10 | \_alethea\_



RT @BFMedicine: Chin: intimate partner homicide often happens as victim is leaving her abuser #MiamiABM

05-Nov-11 17:56 | SofritoGringo



RT @BFMedicine Wagner: If mom's vitamin D is replete, then her milk is replete, and her infant will be replete #breastfeeding #MiamiABM

05-Nov-11 17:55 | HygeiaBaby



Dr. Nancy Chin: Does this issue need further attention, study, funding? What do you think? #MiamiABM

05-Nov-11 17:53 | MilkWhisperer



Dr. Nancy Chin: 1300 women in USA murdered by intimate partners - high % were abused during childbearing years #MiamiABM

05-Nov-11 17:53 | MilkWhisperer





Chin: Can you physiologically let down if you are in a hyper-vigilant state? #breastfeeding #MiamiABM

05-Nov-11 17:48 | BFMedicine



Dr. Nancy Chin: How difficult is it to learn to #breastfeed if you 'can't do anything right' #MiamiABM

05-Nov-11 17:48 | MilkWhisperer



Dr. Nancy Chin on #breastfeeding and Violence Against Women at #MiamiABM

05-Nov-11 17:47 | MilkWhisperer



Chin: intimate partner homicide often happens as victim is leaving her abuser #MiamiABM

05-Nov-11 17:46 | BFMedicine



RT @MilkWhisperer: Dr. Alison Stuebe: Perhaps we should be treating nipple pain with PROBIOTICS not antibiotics - study shows less pain when do #MiamiABM

05-Nov-11 17:41 | BeauChoix



Chin: Understanding the specific contextual factors will change behaviors and outcomes #MiamiABM

05-Nov-11 17:40 | BFMedicine



Chin: Is violence, women and #breastfeeding an issue we should pursue? #MiamiABM

05-Nov-11 17:37 | BFMedicine



RT @BFMedicine: Chin: Stories are the way that people make sense of life #breastfeeding #MiamiABM

05-Nov-11 17:37 | as3pram



RT @BFMedicine: Nancy Chin speaking on #breastfeeding and violence against women #MiamiABM

05-Nov-11 17:36 | as3pram



Chin: Stories are the way that people make sense of life #breastfeeding #MiamiABM

05-Nov-11 17:36 | BFMedicine



Nancy Chin speaking on #breastfeeding and violence against women #MiamiABM

05-Nov-11 17:35 | BFMedicine



RT @BFMedicine: Groer: Formula feeding is the aberrant approach to feeding, with health risks for mom #breastfeeding #MiamiABM

05-Nov-11 17:35 | lparent4



RT @BFMedicine: Study: 27% of moms w/ nipple pain treated for candida actually had Raynaud's #breastfeeding #MiamiABM

05-Nov-11 17:34 | lparent4



RT @BFMedicine: Meta-analysis: maternal obesity linked with decreased #breastfeeding initiation, duration #MiamiABM <http://t.co/CEAbs4qv>

05-Nov-11 17:34 | lparent4



RT @BFMedicine: Prepregnancy overweight linked w/ reduced prolactin response #breastfeeding #MiamiABM <http://t.co/yNQokoZ1>

05-Nov-11 17:34 | lparent4



RT @BFMedicine: Cochrane review: no long term benefit for fortifying milk #MiamiABM <http://t.co/Zn6pcd6v>

05-Nov-11 17:25 | Iparent4



RT @BFMedicine: Mineral accretion increases exponentially during third trimester #MiamiABM

05-Nov-11 17:24 | Iparent4



RT @BFMedicine: Study: probiotics reduce #mastitis pain more than antibiotics #MiamiABM  
<http://t.co/0EqDaHl6>

05-Nov-11 17:23 | Iparent4



RT @BFMedicine: Amy Evans: some women w/ breast implants have glandular hypoplasia #breastfeeding  
#MiamiABM

05-Nov-11 17:22 | Iparent4



RT @BFMedicine: Sandra Sullivan presenting on nourishing preterm babies with human milk #breastfeeding  
#MiamiABM <http://t.co/aW9vHh6S>

05-Nov-11 17:22 | Iparent4



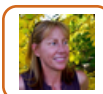
RT @BFMedicine: Lisa Amir: most important predictor of #breastfeeding success is intention #MiamiABM

05-Nov-11 17:22 | Iparent4



RT @BFMedicine: Hind-milk feedings improve weight gain for LBW infants #breastfeeding #MiamiABM  
<http://t.co/exZjfPKh>

05-Nov-11 17:21 | Iparent4



RT @BFMedicine: Wagner: If mom's vitamin D is replete, then her milk is replete, and her infant will be replete  
#breastfeeding #MiamiABM

05-Nov-11 17:19 | NutrCareAutism



RT @BFMedicine: Wagner: If mom's vitamin D is replete, then her milk is replete, and her infant will be replete  
#breastfeeding #MiamiABM

05-Nov-11 17:18 | BridgetTxRD



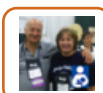
RT @HygeiaBaby: RT @MilkWhisperer #breastfeeding w/ #downsyndrome is VERY possible! HCP's need more  
education on how to support moms #MiamiABM

05-Nov-11 17:12 | drpoppyBHRT



RT @MilkWhisperer #breastfeeding w/ #downsyndrome is VERY possible! HCP's need more education on how  
to support moms #MiamiABM

05-Nov-11 17:11 | HygeiaBaby



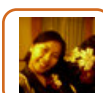
RT @BFMedicine: WABA: calls on physicians to sign WABA pledge <http://t.co/iraAl6vp> #MiamiABM

05-Nov-11 16:55 | sherrycnm



RT @BFMedicine: WABA: calls on physicians to sign WABA pledge <http://t.co/IF9I7FNx> #MiamiABM

05-Nov-11 16:49 | as3pram



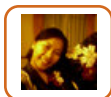
RT @as3pram: RT @BFMedicine: Maternal anxiety reduced after skin2skin w/ babies w/ heart defects  
#breastfeeding #MiamiABM <http://t.co/DwerKrAu>

05-Nov-11 16:45 | genetic84



WABA: calls on physicians to sign WABA pledge <http://t.co/iraAl6vp> #MiamiABM

05-Nov-11 16:41 | BFMedicine



RT @BFMedicine: Delaying bath to 12h postpartum increased exclusive #breastfeeding #MiamiABM  
<http://t.co/DBbflXu6>

05-Nov-11 16:34 | genetic84



RT @as3pram: Tag @aimi\_asi @ID\_AyahASI RT @BFMedicine: WBW Theme for 2012: understanding the past -- planning the future #MiamiABM

05-Nov-11 16:32 | aimi\_jabar



Tag @aimi\_asi @ID\_AyahASI RT @BFMedicine: WBW Theme for 2012: understanding the past -- planning the future #MiamiABM

05-Nov-11 16:31 | as3pram



WBW Theme for 2012: understanding the past -- planning the future #MiamiABM

05-Nov-11 16:31 | BFMedicine



RT @BFMedicine: WABA creates World #Breastfeeding Week action materials <http://t.co/O6GjOGqR> #MiamiABM

05-Nov-11 16:30 | as3pram



WABA creates World #Breastfeeding Week action materials <http://t.co/WUZKmcXk> #MiamiABM

05-Nov-11 16:29 | BFMedicine



RT @BFMedicine: WABA brings together multiple partners <http://t.co/dlffLrCs> #MiamiABM

05-Nov-11 16:28 | as3pram



WABA brings together multiple partners <http://t.co/QuxhQpbm> #MiamiABM

05-Nov-11 16:27 | BFMedicine



RT @MilkWhisperer: Dr. B. Philipp: #breastfeeding w/ #downsyndrome is VERY possible! HCP's need more education on how to support moms #MiamiABM

05-Nov-11 16:27 | iamambermccann



Felicity Savage! speaking at lunch on #waba history. #Breastfeeding #MiamiABM

05-Nov-11 16:25 | mommamdfw



RT @BFMedicine: Smoking decreases milk production through effects on prolactin #breastfeeding #MiamiABM

05-Nov-11 16:22 | iamambermccann



RT @MilkWhisperer: Dr. Alison Stuebe: "I'm sorry, its just going to hurt" is not an appropriate response from a #breastfeeding mother's hps's #MiamiABM

05-Nov-11 16:20 | iamambermccann



RT @BFMedicine: Felicity Savage presenting on WABA <http://t.co/H7tTYqyj> #Breastfeeding #MiamiABM

05-Nov-11 16:20 | as3pram



Felicity Savage presenting on WABA <http://t.co/aXi4TLX9> #Breastfeeding #MiamiABM

05-Nov-11 16:15 | BFMedicine



RT @MilkWhisperer: Dr. Alison Stuebe: Study shows that up to 95% of women in week 1 post partum experiencing #breastfeeding pain! #MiamiABM

05-Nov-11 16:14 | iamambermccann





RT @BFMedicine: Dr. Philipp: Learning from the moms: Feeding infants with Down Syndrome  
<http://t.co/GdaxvsAp> #MiamiABM

05-Nov-11 15:59 | bfdboobies



RT @MilkWhisperer: Dr Raylene Phillips: Mothers who smoke post partum are more likely to wean by 10 weeks  
#MiamiABM

05-Nov-11 15:53 | Dkay81



RT @MilkWhisperer: Live tweets coming from #MiamiABM today! @drtwi @mdlor924 @suehallmd  
@LeighAnne625 @hotpinkmama @NBfCenter @DagmarBleasdale @jsequoia

05-Nov-11 15:52 | allattamento



Live tweets coming from #MiamiABM today! @drtwi @mdlor924 @suehallmd @LeighAnne625 @hotpinkmama  
@NBfCenter @DagmarBleasdale @jsequoia

05-Nov-11 15:52 | MilkWhisperer



RT @MilkWhisperer: @BF\_USA @babyfriendly @humanmilknews @DianaBCLC @MamiMiaNYC  
@allattamento @as3pram Dr. Sawasdivorn - Thailand: Speaking now at #MiamiABM

05-Nov-11 15:51 | allattamento



Many thanks to those RT & MT the #MiamiABM tweets! @DianaBCLC @DoctorDrMILK @Mango1531  
@60secondparent @TheEmpressMama @multiplereason

05-Nov-11 15:42 | MilkWhisperer



Dr. Carol Wagner: Higher latitudes is a factor in lower Vit D stores IF you are CAUCASIAN #MiamiABM

05-Nov-11 14:53 | MilkWhisperer



Higher latitude adversely effects Vit D status only in lactating caucasian women. #MiamiABM #breastfeeding

05-Nov-11 14:53 | mommamdfw



Can't assume high or low vitamin D status based on latitude #breastfeeding #MiamiABM

05-Nov-11 14:52 | BFMedicine



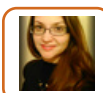
RT @BFMedicine: Wagner: If mom's vitamin D is replete, then her milk is replete, and her infant will be replete  
#breastfeeding #MiamiABM

05-Nov-11 14:51 | mommamdfw



RT @MilkWhisperer: Aza Abul-Fadl: #breastfeeding and NOT #formulafeeding should be recommended for ALL  
babies with heart failure/disease #MiamiABM

05-Nov-11 14:51 | beesandbeanslc



RT @BFMedicine: Maternal anxiety reduced after skin2skin w/ babies w/ heart defects #breastfeeding  
#MiamiABM <http://t.co/GdaxvsAp>

05-Nov-11 14:51 | beesandbeanslc



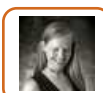
RT @BFMedicine: Abul-Fadl: Higher oxygen levels during #breastfeeding than during bottle feeding  
<http://t.co/GdaxvsAp> #MiamiABM

05-Nov-11 14:51 | beesandbeanslc



RT @BFMedicine: Human milk-derived fortifier reduced NEC rates #breastfeeding #MiamiABM  
<http://t.co/exZjfPKh>

05-Nov-11 14:51 | mommamdfw



RT @BFMedicine: Exclusive human milk diet increased net cost by \$287.87 #breastfeeding #MiamiABM  
<http://t.co/DBbflXu6>

05-Nov-11 14:50 | mommamdfw



Dr. Carol Wagner: If mom is low in Vit D, then her milk will be low, and so will baby be low #MiamiABM

05-Nov-11 14:48 | MilkWhisperer



Dr. Carol Wagner on Vitamin D and #breastfeeding #MiamiABM

05-Nov-11 14:47 | MilkWhisperer



Dr. B. Philipp: #breastfeeding w/ #downsyndrome is VERY possible! HCP's need more education on how to support moms #MiamiABM

05-Nov-11 14:44 | MilkWhisperer



RT @BFMedicine: 12% of mothers told #breastfeeding not possible with #downsyndrome #MiamiABM

05-Nov-11 14:43 | as3pram



Dr. B. Philipp: Wide range of information from hcp's regarding #breastfeed w/ #downsyndrome, not always correct #MiamiABM

05-Nov-11 14:43 | MilkWhisperer



RT @BFMedicine: Dr. Philipp: Learning from the moms: Feeding infants with Down Syndrome  
<http://t.co/DwerKrAu> #MiamiABM

05-Nov-11 14:43 | as3pram



RT @BFMedicine: Unicef leaflet emphasized togetherness of mother and child #breastfeeding #MiamiABM

05-Nov-11 14:42 | as3pram



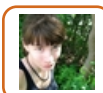
Dr. B. Philipp: majority of women were told negative things about possibility/effort of #breastfeeding #downsyndrome infant #MiamiABM

05-Nov-11 14:42 | MilkWhisperer



12% of mothers told #breastfeeding not possible with #downsyndrome #MiamiABM

05-Nov-11 14:41 | BFMedicine



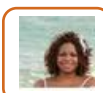
RT @BFMedicine: Presentation: A Report from Japan: What We Learned from the 3.11 Disaster  
<http://t.co/GdaxvsAp> #breastfeeding #MiamiABM

05-Nov-11 14:40 | refashionista



Dr. B. Philipp: Barriers to #breastfeeding with #downsyndrome - younger baby, less time in hospital, surgery, illnesses #MiamiABM

05-Nov-11 14:40 | MilkWhisperer



RT @BFMedicine: The myth that artificial feeding is safe in developed countries such as Japan collapsed #MiamiABM

05-Nov-11 14:38 | Blacktating



Dr. B. Philipp: 98 mothers responded to study questionnaire regarding #breastfeeding and #downsyndrome #MiamiABM

05-Nov-11 14:37 | MilkWhisperer



Online survey of mothers of babies with #downsyndrome #breastfeeding #MiamiABM

05-Nov-11 14:36 | BFMedicine



Bobbi Philipp! #breastfeeding an infant with #DS has special barriers AND benefits #MiamiABM

05-Nov-11 14:36 | mommamdfw



RT @BFMedicine: Collaboration between Unicef, Japan Liaison Council of #breastfeeding key to response to earthquake #MiamiABM

05-Nov-11 14:33 | as3pram



RT @BFMedicine: Abul-Fadl: Higher oxygen levels during #breastfeeding than during bottle feeding <http://t.co/GdaxvsAp> #MiamiABM

05-Nov-11 14:32 | DoctorDrMILK



Unicef leaflet emphasized togetherness of mother and child #breastfeeding #MiamiABM

05-Nov-11 14:31 | BFMedicine



Collaboration between Unicef, Japan Liaison Council of #breastfeeding key to response to earthquake #MiamiABM

05-Nov-11 14:30 | BFMedicine



Japan: Followed a protocol of #breastfeeding in emergencies following 3/11 quake, amidst combating free formula distribution =( #MiamiABM

05-Nov-11 14:30 | MilkWhisperer



RT @BFMedicine: Presentation: A Report from Japan: What We Learned from the 3.11 Disaster <http://t.co/DwerKrAu> #breastfeeding #MiamiABM

05-Nov-11 14:29 | as3pram



RT @BFMedicine: Maternal anxiety reduced after skin2skin w/ babies w/ heart defects #breastfeeding #MiamiABM <http://t.co/DwerKrAu>

05-Nov-11 14:29 | as3pram



RT @BFMedicine: Abul-Fadl: Higher oxygen levels during #breastfeeding than during bottle feeding <http://t.co/DwerKrAu> #MiamiABM

05-Nov-11 14:29 | as3pram



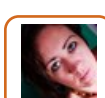
RT @BFMedicine: Presentation: A Report from Japan: What We Learned from the 3.11 Disaster <http://t.co/GdaxvsAp> #breastfeeding #MiamiABM

05-Nov-11 14:27 | mommamdfw



RT @BFMedicine: Study enrolled 55 babies with heart disease #breastfeeding #MiamiABM

05-Nov-11 14:27 | as3pram



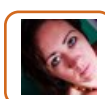
RT @BFMedicine: Smoking decreases milk production through effects on prolactin #breastfeeding #MiamiABM

05-Nov-11 14:26 | KimLiving



Presentation: A Report from Japan: What We Learned from the 3.11 Disaster <http://t.co/GdaxvsAp> #breastfeeding #MiamiABM

05-Nov-11 14:26 | BFMedicine



RT @MilkWhisperer: Dr. Alison Stuebe: Ibuprofen and 'frog pose' (yoga) can help 'take a deep breath' and relieve #breastfeeding pain #MiamiABM

05-Nov-11 14:26 | KimLiving



RT @BFMedicine: Thailand: #breastfeeding is the first drop of family bonding with love #MiamiABM

05-Nov-11 14:24 | LeighAnne625



Azza Abul-Fadl: #breastfeeding and NOT #formulafeeding should be recommended for ALL babies with heart failure/disease #MiamiABM

05-Nov-11 14:23 | MilkWhisperer



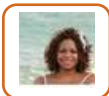
Study enrolled 55 babies with heart disease #breastfeeding #MiamiABM

05-Nov-11 14:16 | BFMedicine



Babes with congenital heart disease and heart failure have better O2 sats when #breastfeeding vs. formula. #MiamiABM

05-Nov-11 14:14 | mommamdfw



RT @MilkWhisperer: Dr. Alison Stuebe: 40% chronic pain can be categorized to those with tendency to catastrophize pain (worry about it ceaselessly) #MiamiABM

05-Nov-11 14:14 | Blacktating



RT @MilkWhisperer: Dr. Alison Stuebe: Pain intensity and willingness to experience it are two different constructs #MiamiABM

05-Nov-11 14:14 | Blacktating



Azza Abul-Fadl presenting on skin2skin and heart failure <http://t.co/GdaxvsAp> #breastfeeding #MiamiABM

05-Nov-11 14:13 | BFMedicine



RT @BFMedicine: Smoking decreases milk production through effects on prolactin #breastfeeding #MiamiABM

05-Nov-11 14:12 | Blacktating



Dr Raylene Phillips: Interventions to support mother/infant bonding increased #breastfeeding and reduced #smoking relapse #MiamiABM

05-Nov-11 14:11 | MilkWhisperer



86 vs. 46% #breastfeeding at 8 weeks in intervention vs. control group #MiamiABM <http://t.co/GdaxvsAp>

05-Nov-11 14:11 | BFMedicine



Intervention group, 81% smoke-free, vs 46% in control group at 8 weeks #breastfeeding #MiamiABM

05-Nov-11 14:10 | BFMedicine



RT @BFMedicine: Both groups received lactation support, handouts on #breastfeeding and smoking cessation #MiamiABM

05-Nov-11 14:09 | as3pram



RT @BFMedicine: Smoking decreases milk production through effects on prolactin #breastfeeding #MiamiABM

05-Nov-11 14:09 | as3pram



RT @BFMedicine: New research: skin3skin intervention 4 NICU moms increases #breastfeeding, decreases smoking <http://t.co/DwerKrAu> #MiamiABM

05-Nov-11 14:09 | as3pram



Both groups received lactation support, handouts on #breastfeeding and smoking cessation #MiamiABM

05-Nov-11 14:05 | BFMedicine



RT @BFMedicine: Smoking decreases milk production through effects on prolactin #breastfeeding #MiamiABM

05-Nov-11 14:04 | mommamdfw



Dr Raylene Phillips: Helping mothers to quit smoking during pregnancy actually helps to ensure longer #breastfeeding duration #MiamiABM

05-Nov-11 14:03 | MilkWhisperer



Oops... not Dr. Bogen, but Dr. Raylene Phillips speaking now #MiamiABM

05-Nov-11 14:00 | MilkWhisperer



@MLynch47 Hi, Maria! Search #MiamiABM for all the tweets from the conferences... totally fun and a great way to take notes! =D

05-Nov-11 13:57 | MilkWhisperer



Some docs treating severely wounded nipples with burn dressings! Wounded nipples IS wounded tissue! #MiamiABM

05-Nov-11 13:56 | MilkWhisperer



History of abuse and/or traumatic birth experience is a huge piece of pain conditions in #breastfeeding - Dr. Alison Stuebe #MiamiABM

05-Nov-11 13:55 | MilkWhisperer



Dr. Amy Kotler used \*magnesium\* for painful letdowns #ihaveoversupply #ihaveOMER #MiamiABM!

05-Nov-11 13:53 | MilkWhisperer



Dr. Debra Bogen up next at #MiamiABM!

05-Nov-11 13:51 | MilkWhisperer



Dr. Debra Bogen: Up next at #MiamiABM

05-Nov-11 13:50 | MilkWhisperer



Dr. Alison Stuebe: 'I'm sorry, its just going to hurt' is not an appropriate response from a #breastfeeding mother's hps's #MiamiABM

05-Nov-11 13:46 | MilkWhisperer



Dr. Alison Stuebe: Ibuprophen and 'frog pose' (yoga) can help 'take a deep breath' and relieve #breastfeeding pain #MiamiABM

05-Nov-11 13:45 | MilkWhisperer



Dr. Alison Stuebe: Pain is a part of daily life, but suffering is optional #MiamiABM

05-Nov-11 13:44 | MilkWhisperer



Dr. Alison Stuebe: Post partum tension/stress is related to nipple & breast pain #MiamiABM

05-Nov-11 13:43 | MilkWhisperer



Dr. Alison Stuebe Neurpathic pain -extreme sensitivity trauma difficulties? Heighened awareness? Too much info to brain via nerves #MiamiABM

05-Nov-11 13:42 | MilkWhisperer



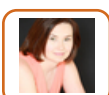
Vasospasm common reason for nipple pain. Apply heat and assess response. #MiamiABM #breastfeeding

05-Nov-11 13:39 | mommamdfw



Dr. Alison Stuebe: Some #breastfeeding mothers with RESOLVED nipple trauma still experience pain - hello, Raynauds? #MiamiABM

05-Nov-11 13:38 | MilkWhisperer



@MilkWhisperer Thanks for all your tweets at #MiamiABM appreciate it! :)

05-Nov-11 13:31 | multiplereason





Dr. Alison Stuebe: 40% chronic pain can be categorized to those with tendency to catastrophize pain (worry about it ceaselessly) #MiamiABM

05-Nov-11 13:26 | MilkWhisperer



RT @mommandfw: Stuebe: Staph more likely the bad actor than candida. #breastfeeding #MiamiABM

05-Nov-11 13:25 | MilkWhisperer



RT @MilkWhisperer: Dr. Alison Stuebe: Depressive symptoms (#ppd) is high among #breastfeeding mothers experiencing pain #MiamiABM

05-Nov-11 13:25 | multiplereason



RT @mommandfw: Resolution of nipple pain with miconazole or fluconazole does NOT empirically disprove candida. Staph also treated. #breastfeeding #MiamiABM

05-Nov-11 13:25 | MilkWhisperer



RT @BFMedicine: Thai #breastfeeding materials feature prince of Thailand, who was exclusively breastfed for 6 months #MiamiABM

05-Nov-11 13:24 | multiplereason



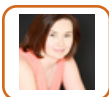
RT @MilkWhisperer: Dr. Alison Stuebe: YEAST (candida albicans) - women with #breastfeeding pain: 15% had candida, 40% had staph! #MiamiABM

05-Nov-11 13:24 | multiplereason



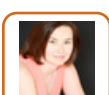
RT @MilkWhisperer: Dr. Alison Stuebe: #breastfeeding and nipple pain affected by maternal mood and pain receptors (central pain reception) #MiamiABM

05-Nov-11 13:23 | multiplereason



RT @mommandfw: Resolution of nipple pain with miconazole or fluconazole does NOT empirically disprove candida. Staph also treated. #breastfeeding #MiamiABM

05-Nov-11 13:23 | multiplereason



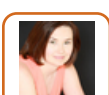
RT @MilkWhisperer: Dr. Alison Stuebe: #breastfeeding mothers predisposed to eczema, vasospasm, etc. are predisposed to nipple tissue breakdown/pain #MiamiABM

05-Nov-11 13:23 | multiplereason



Dr. Alison Stuebe: Pain intensity and willingness to experience it are two different constructs #MiamiABM

05-Nov-11 13:23 | MilkWhisperer



RT @mommandfw: Stuebe: Staph more likely the bad actor than candida. #breastfeeding #MiamiABM

05-Nov-11 13:23 | multiplereason



Dr. Alison Stuebe: #breastfeeding and nipple pain affected by maternal mood and pain receptors (central pain reception) #MiamiABM

05-Nov-11 13:21 | MilkWhisperer



Resolution of nipple pain with miconazole or fluconazole does NOT empirically disprove candida. Staph also treated. #breastfeeding #MiamiABM

05-Nov-11 13:20 | mommandfw



Dr. Alison Stuebe: Perhaps we should be treating nipple pain with PROBIOTICS not antibiotics - study shows less pain when do #MiamiABM

05-Nov-11 13:19 | MilkWhisperer



RT @BFMedicine Strategic triangle: creation of relevant knowledge, social movement, political involvement #breastfeeding #MiamiABM

05-Nov-11 13:18 | DianaBCLC



RT @MilkWhisperer: Dr. Alison Stuebe: Depressive symptoms (#ppd) is high among #breastfeeding mothers experiencing pain #MiamiABM

05-Nov-11 13:11 | KimLiving



RT @MilkWhisperer: Dr. Alison Stuebe: Study shows that up to 95% of women in week 1 post partum experiencing #breastfeeding pain! #MiamiABM

05-Nov-11 13:11 | KimLiving



RT @BFMedicine: Thai atlas to be distributed through royal family Bond of love project #breastfeeding #MiamiABM

05-Nov-11 13:10 | as3pram



RT @BFMedicine: Thailand: #breastfeeding is the first drop of family bonding with love #MiamiABM

05-Nov-11 13:10 | as3pram



Dr. Alison Stuebe: Causes for #breastfeeding pain and its diagnoses depends on what medical practitioner is involved #MiamiABM

05-Nov-11 13:10 | MilkWhisperer



RT @BFMedicine: Thai #breastfeeding materials feature prince of Thailand, who was exclusively breastfed for 6 months #MiamiABM

05-Nov-11 13:09 | KimLiving



RT @BFMedicine: Goal of Thai #breastfeeding atlas: increase knowledge and skills of healthcare professionals #MiamiABM

05-Nov-11 13:09 | as3pram



RT @BFMedicine: Strategic triangle: creation of relevant knowledge, social movement, political involvement #breastfeeding #MiamiABM

05-Nov-11 13:09 | as3pram



Dr. Alison Stuebe: Study shows that up to 95% of women in week 1 post partum experiencing #breastfeeding pain! #MiamiABM

05-Nov-11 13:08 | MilkWhisperer



Dr. Alison Stuebe: Depressive symptoms (#ppd) is high among #breastfeeding mothers experiencing pain #MiamiABM

05-Nov-11 13:07 | MilkWhisperer



Dr. Alison Stuebe: Cultures of the nipple/infant mouth can help diagnose SECONDARY pain cause, but may not pinpoint problem #MiamiABM

05-Nov-11 13:07 | MilkWhisperer



Dr. Alison Stuebe: Working closely with Colleagues, especially #ibclc to diagnose tongue tie and #breastfeeding pain causes #MiamiABM

05-Nov-11 13:05 | MilkWhisperer



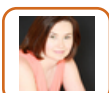
Dr. Alison Stuebe: #breastfeeding - why is it hurting? Not one answer, but stay tuned for some of the reasons! #MiamiABM

05-Nov-11 13:04 | MilkWhisperer



@PIH @theIBCLC @cathycarothers @mdlor924 @suehallmd @BabyBonding Dr. Sawasdivorn - Thailand: Speaking next on nipple pain at #MiamiABM

05-Nov-11 13:02 | MilkWhisperer



RT @MilkWhisperer: Dr. Sawasdivorn - Thailand: Thai #breastfeeding digital library available on line, a central place for all digital #bfing info #MiamiABM

05-Nov-11 13:00 | multiplereason



#breastfeeding is not just the science, but it is the art #MiamiABM

05-Nov-11 12:47 | BFMedicine



@DesirreAndrews @An\_armadillo @drcindyblog @portlandmidwife @docstaff @catchingbabies Dr. Sawasdivorn - Thailand: speaking now #MiamiABM

05-Nov-11 12:47 | MilkWhisperer



Dr. Sawasdivorn - Thailand: Along with Dr. Kannika, learned that publishing a book NOT easy to do! But... they have done it! #MiamiABM

05-Nov-11 12:46 | MilkWhisperer



Dr. Sawasdivorn - Thailand: Funding for Thai Breastfeeding Atlas also provided by Banks & Companies! Ask and you shall receive! #MiamiABM

05-Nov-11 12:44 | MilkWhisperer



Thailand: #breastfeeding is the first drop of family bonding with love #MiamiABM

05-Nov-11 12:43 | BFMedicine



@FrecilliaRegina @KellyMomdotcom @drcindyhaines @PureLoveBabies @DrVLavigneDC Dr. Sawasdivorn - Thailand: Speaking now at #MiamiABM

05-Nov-11 12:43 | MilkWhisperer



@eurolacpuntnet @phdinparenting @DrGreene @BestforBabes @DoctorDrMILK @stellatinia Dr. Sawasdivorn - Thailand: Speaking now at #MiamiABM

05-Nov-11 12:42 | MilkWhisperer



@\_breastfeeding @bethibclc @letsbreastfeed @TheLeakyBoob @housniati @babydickey Dr. Sawasdivorn - Thailand: Speaking now at #MiamiABM

05-Nov-11 12:40 | MilkWhisperer



@BF\_USA @babyfriendly @humanmilknews @DianaIBCLC @MamiMiaNYC @allattamento @as3pram Dr. Sawasdivorn - Thailand: Speaking now at #MiamiABM

05-Nov-11 12:39 | MilkWhisperer



Thai royal family distributes code-compliant #breastfeeding bags to new mothers #MiamiABM

05-Nov-11 12:37 | BFMedicine



Dr. Sawasdivorn - Thailand: Thai Breastfeeding Atlas full of photos of Thai babies and Thai breasts! Cultural.. relevant...useful! #MiamiABM

05-Nov-11 12:37 | MilkWhisperer



Project supported by Rockefeller Foundation grant to Thai #breastfeeding center foundation <http://t.co/mT9lt017> #MiamiABM

05-Nov-11 12:36 | BFMedicine



Thai #breastfeeding atlas to be published in next 3-4 months -- 600 pictures, 3 years of work #MiamiABM

05-Nov-11 12:35 | BFMedicine



Dr. Sawasdivorn - Thailand: Thai Breastfeeding Atlas so far has over 600 photographs! Will be published within next few months! #MiamiABM

05-Nov-11 12:35 | MilkWhisperer



Dr. Sawasdivorn - Thailand: A combination of simple, interactive illustrations AND practical teaching for case management #MiamiABM

05-Nov-11 12:34 | MilkWhisperer



RT @BFMedicine: Thai #breastfeeding materials feature prince of Thailand, who was exclusively breastfed for 6 months #MiamiABM

05-Nov-11 12:30 | as3pram



Dr. Sawasdivorn - Thailand: 97% initiation and 30% at six months #MiamiABM

05-Nov-11 12:29 | MilkWhisperer



Thailand 2006-2009: exclusive #breastfeeding at 6 months increased from 5 to 30% #MiamiABM

05-Nov-11 12:29 | BFMedicine



Dr. Sawasdivorn - Thailand: Since the establishment of Thai Breastfeeding Centre 40-60% of the country EBF for 4 months!!! #MiamiABM

05-Nov-11 12:28 | MilkWhisperer



Thai #breastfeeding materials feature prince of Thailand, who was exclusively breastfed for 6 months #MiamiABM

05-Nov-11 12:28 | BFMedicine



RT @BFMedicine: Thailand: Family bonding with love royal project - #breastfeeding was the first drop. #MiamiABM <http://t.co/dHO9sa3h>

05-Nov-11 12:28 | as3pram



RT @BFMedicine: Siraporn Sawasdivorn presenting on Thai #breastfeeding atlas #MiamiABM

05-Nov-11 12:27 | as3pram



Dr. Sawasdivorn - Thailand: Since 2010 the country has been promoting Family Bonding with Love - #breastfeeding plays big role! #MiamiABM

05-Nov-11 12:26 | MilkWhisperer



Dr. Sawasdivorn -Thailand: The Royal Family agreed to allow the little prince's photo to be used for #breastfeeding promotion! WOW #MiamiABM

05-Nov-11 12:26 | MilkWhisperer



Thailand: Family bonding with love royal project - #breastfeeding was the first drop. #MiamiABM <http://t.co/jsSBGAhR>

05-Nov-11 12:25 | BFMedicine



Dr. Sawasdivorn - Thailand: The Thai Breastfeeding Centre helped Princess Srirasam to exclusively #breastfeed for 6 months! #MiamiABM

05-Nov-11 12:24 | MilkWhisperer



Dr. Sawasdivorn - Thailand: 7 representatives from Thailand here today! Working tirelessly to promote #breastfeeding in Thailand #MiamiABM

05-Nov-11 12:23 | MilkWhisperer



@JayGordonMDFAAP @KimLiving @thebrideofchuky @BoulderObGyn @Nurtured Child @DrMarySue @drOei Follow along as I tweet live from #MiamiABM !

05-Nov-11 12:21 | MilkWhisperer



Siraporn Sawasdivorn presenting on Thai #breastfeeding atlas #MiamiABM

05-Nov-11 12:21 | BFMedicine



Dr. S. Sawasdivorn, MD from Thailand presenting now - Thai Breastfeeding Atlas at #MiamiABM! Follow along as I tweet live all day! #ibclc

05-Nov-11 12:19 | MilkWhisperer



RT @BFMedicine: Need political will, funding, coordination to make exclusive #breastfeeding social norm #MiamiABM

05-Nov-11 01:23 | NBfCenter



RT @BFMedicine: Delaying bath to 12h postpartum increased exclusive #breastfeeding #MiamiABM <http://t.co/DBbflXu6>

05-Nov-11 01:02 | DoctorDrMILK



RT @BFMedicine: Lisa Amir: most important predictor of #breastfeeding success is intention #MiamiABM

05-Nov-11 00:04 | Dkay81



RT @BFMedicine: Joint Commission: request skin to skin contact immediately after birth #Breastfeeding #MiamiABM <http://t.co/WH68hxj8>

05-Nov-11 00:04 | CB\_babe



"@BFMedicine: Speak up brochures available in English and Spanish <http://t.co/8wqlgWXe> #Breastfeeding #MiamiABM"

04-Nov-11 23:52 | lacted



Speak Up #Breastfeeding video planned #MiamiABM <http://t.co/WH68hxj8>

04-Nov-11 23:50 | BFMedicine



Joint Commission: request skin to skin contact immediately after birth #Breastfeeding #MiamiABM <http://t.co/WH68hxj8>

04-Nov-11 23:49 | BFMedicine



Speak up brochures available in English and Spanish <http://t.co/WH68hxj8> #Breastfeeding #MiamiABM

04-Nov-11 23:46 | BFMedicine



RT @BFMedicine: Key in Brazil was social mobilization in 1981 for #breastfeeding to become social norm #MiamiABM

04-Nov-11 23:23 | as3pram



RT @BFMedicine: Need political will, funding, coordination to make exclusive #breastfeeding social norm #MiamiABM

04-Nov-11 23:22 | as3pram



RT @BFMedicine: Social marketing played key role in Brazil's success #breastfeeding #MiamiABM

04-Nov-11 23:22 | as3pram



RT @BFMedicine: Brazil world leader in milk banking #breastfeeding #MiamiABM <http://t.co/eAuTggyN>

04-Nov-11 23:21 | as3pram



RT @BFMedicine: In Brazil, to become baby friendly, hospital must lower cs rate #breastfeeding #MiamiABM

04-Nov-11 23:21 | as3pram



RT @BFMedicine: Wide range of prolactin compatible w/ exclusive #breastfeeding #MiamiABM <http://t.co/aWda9yne>

04-Nov-11 23:19 | as3pram



RT @BFMedicine: Delaying bath to 12h postpartum increased exclusive #breastfeeding #MiamiABM <http://t.co/aWda9yne>

04-Nov-11 23:19 | as3pram





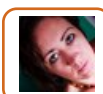
RT @HygeiaKate: RT @BFMedicine Need political will, funding, coordination to make exclusive #breastfeeding social norm #MiamiABM

04-Nov-11 21:39 | carolgair



RT @BFMedicine: Delaying bath to 12h postpartum increased exclusive #breastfeeding #MiamiABM <http://t.co/DBbf1Xu6>

04-Nov-11 21:27 | KimLiving



RT @BFMedicine: Need political will, funding, coordination to make exclusive #breastfeeding social norm #MiamiABM

04-Nov-11 21:26 | KimLiving



We were able to do it in Brazil. There is no reason we can't do it in the US. #breastfeeding #MiamiABM

04-Nov-11 21:20 | BFMedicine



RT @BFMedicine Need political will, funding, coordination to make exclusive #breastfeeding social norm #MiamiABM

04-Nov-11 21:20 | HygeiaKate



Key in Brazil was social mobilization in 1981 for #breastfeeding to become social norm #MiamiABM

04-Nov-11 21:19 | BFMedicine



RT @BFMedicine: Loving support developing new campaign for WIC #breastfeeding #MiamiABM

04-Nov-11 21:18 | yayayarndiva



Office of women's health planning meida campaign to support #breastfeeding among African-American moms #MiamiABM

04-Nov-11 21:17 | BFMedicine



RT @BFMedicine: IOM report: great interest in social media for #breastfeeding <http://t.co/QFnYUryt> #MiamiABM #bf

04-Nov-11 21:17 | yayayarndiva



Loving support developing new campaign for WIC #breastfeeding #MiamiABM

04-Nov-11 21:17 | BFMedicine



IOM report: great interest in social media for #breastfeeding <http://t.co/c4ko1vQm> #MiamiABM

04-Nov-11 21:16 | BFMedicine



Key difference: formula companies in Brazil much more regulated than in US #breastfeeding #MiamiABM

04-Nov-11 21:14 | BFMedicine



Need political will, funding, coordination to make exclusive #breastfeeding social norm #MiamiABM

04-Nov-11 21:13 | BFMedicine



Maybe US is like Brazil was in 1975... #breastfeeding #MiamiABM

04-Nov-11 21:13 | BFMedicine



Social marketing key to updating WIC #breastfeeding campaign <http://t.co/c4ko1vQm> #MiamiABM

04-Nov-11 21:12 | BFMedicine



Brazil world leader in milk banking #breastfeeding #MiamiABM <http://t.co/r73QU0dB>

04-Nov-11 21:05 | BFMedicine



RT @BFMedicine: In Brazil, to become baby friendly, hospital must lower cs rate #breastfeeding #MiamiABM

04-Nov-11 21:02 | MilkWhisperer



Brazil has developed baby friendly designation for primary care #breastfeeding #MiamiABM

04-Nov-11 21:01 | BFMedicine



In Brazil, to become baby friendly, hospital must lower cs rate #breastfeeding #MiamiABM

04-Nov-11 21:01 | BFMedicine



Elephant in room: Brazil has one of highest c-section rates in the world #breastfeeding #MiamiABM

04-Nov-11 21:00 | BFMedicine



RT @BFMedicine: Lisa Amir: most important predictor of #breastfeeding success is intention #MiamiABM

04-Nov-11 20:59 | MilkWhisperer



RT @BFMedicine: Delaying bath to 12h postpartum increased exclusive #breastfeeding #MiamiABM  
<http://t.co/DBbflXu6>

04-Nov-11 20:58 | MilkWhisperer



Soap opera campaign: 500 million contacts in Sao Paulo alone #breastfeeding #MiamiABM

04-Nov-11 20:56 | BFMedicine



"Your breasts will not drop if you breastfeed" #breastfeed #MiamiABM

04-Nov-11 20:54 | BFMedicine



"You can produce enough milk" #breastfeeding #MiamiABM

04-Nov-11 20:54 | BFMedicine



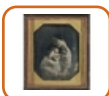
First phase: sensitize decision-makers that #breastfeeding saves money #MiamiABM

04-Nov-11 20:52 | BFMedicine



Wide range of prolactin compatible w/ exclusive #breastfeeding #MiamiABM <http://t.co/DBbflXu6>

04-Nov-11 20:45 | BFMedicine



RT @BFMedicine: Delaying bath to 12h postpartum increased exclusive #breastfeeding #MiamiABM  
<http://t.co/DBbflXu6>

04-Nov-11 20:44 | Esme\_SageFemme




Delaying bath to 12h postpartum increased exclusive #breastfeeding #MiamiABM <http://t.co/DBbflXu6>

04-Nov-11 20:43 | BFMedicine



@HygeiaKate: So true! RT @BFMedicine Most important predictor of #breastfeeding success is intention #MiamiABM #bfcafe Education is so imp

04-Nov-11 20:12 | Furchildmama




RT @BFMedicine: Paget's: typically unilateral, slowly advancing, resists tx #breastfeeding #MiamiABM

04-Nov-11 19:56 | DenverLactation




Health workers in Kenya poorly informed re HIV and #breastfeeding #MiamiABM <http://t.co/DBbfIXu6>

04-Nov-11 19:56 | BFMedicine



RT @BFMedicine: Lichen simplex chronicus: caused by scratching, gets better with cortisone #breastfeeding #MiamiABM

04-Nov-11 19:56 | DenverLactation




RT @BFMedicine: To diagnose atopic dermatitis of nipple, look for eczema elsewhere #breastfeeding #MiamiABM

04-Nov-11 19:55 | DenverLactation




RT @BFMedicine: Winter: eczema affects 2% of #breastfeeding moms #MiamiABM

04-Nov-11 19:55 | DenverLactation




RT @BFMedicine: Jonathan Winter speaking on dermatology of the breast #breastfeeding #MiamiABM

04-Nov-11 19:55 | DenverLactation



Exclusive human milk diet increased net cost by \$287.87 #breastfeeding #MiamiABM <http://t.co/DBbfIXu6>

04-Nov-11 19:54 | BFMedicine




"@BFMedicine: Hind-milk feedings improve weight gain for LBW infants #breastfeeding #MiamiABM <http://t.co/OT1P8HUM>"

04-Nov-11 19:50 | bigbluesheart



Such an obvious, but important message. RT @BFMedicine: Lisa Amir: most important predictor of #breastfeeding success is intention #MiamiABM

04-Nov-11 19:47 | Hoovereeno




Human milk-derived fortifier reduced NEC rates #breastfeeding #MiamiABM <http://t.co/exZjfPKh>

04-Nov-11 19:46 | BFMedicine



Hind-milk feedings improve weight gain for LBW infants #breastfeeding #MiamiABM <http://t.co/exZjfPKh>

04-Nov-11 19:44 | BFMedicine




RT @BFMedicine: Amir: physiologic changes may be secondary to #breastfeeding behavior #MiamiABM

04-Nov-11 19:13 | as3pram




RT @BFMedicine: Lisa Amir: most important predictor of #breastfeeding success is intention #MiamiABM

04-Nov-11 19:13 | as3pram



RT @BFMedicine: Need studies of effect of obesity on breast development during puberty, pregnancy #MiamiABM #breastfeeding

04-Nov-11 19:13 | as3pram



RT @BFMedicine: Next steps: prospective study of androgen levels, breast changes, lactation #MiamiABM #breastfeeding

04-Nov-11 19:13 | as3pram



RT @BFMedicine: Study: 27% of moms w/ nipple pain treated for candida actually had Raynaud's #breastfeeding #MiamiABM

04-Nov-11 19:11 | Laktistino



RT @BFMedicine: Groer: we are only mammals who choose whether to lactate #MiamiABM #breastfeeding

04-Nov-11 19:03 | pumpingmummy



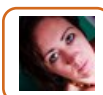
So true! RT @BFMedicine Most important predictor of #breastfeeding success is intention #MiamiABM #bfcafe

04-Nov-11 19:02 | HygeiaKate



RT @BFMedicine: Amir: physiologic changes may be secondary to #breastfeeding behavior #MiamiABM

04-Nov-11 19:00 | KimLiving



RT @BFMedicine: Lisa Amir: most important predictor of #breastfeeding success is intention #MiamiABM

04-Nov-11 19:00 | KimLiving



@bvc\_hengelo Prepregnancy overweight linked w/ reduced prolactin response #breastfeeding #MiamiABM  
1.usa.gov/sA2GrD

04-Nov-11 18:57 | AnnetMulder



Amir: physiologic changes may be secondary to #breastfeeding behavior #MiamiABM

04-Nov-11 18:57 | BFMedicine



Lisa Amir: most important predictor of #breastfeeding success is intention #MiamiABM

04-Nov-11 18:55 | BFMedicine



RT @BFMedicine: Study: 27% of moms w/ nipple pain treated for candida actually had Raynaud's #breastfeeding #MiamiABM

04-Nov-11 18:54 | KimLiving



Need studies of effect of obesity on breast development during puberty, pregnancy #MiamiABM #breastfeeding

04-Nov-11 18:53 | BFMedicine



Next steps: prospective study of androgen levels, breast changes, lactation #MiamiABM #breastfeeding

04-Nov-11 18:52 | BFMedicine



For high BMI moms, close follow-up for #breastfeeding, encourage skin-to-skin #MiamiABM

04-Nov-11 18:51 | BFMedicine



Important to distinguish low vs high insulin, androgens in obesity #MiamiABM #breastfeeding

04-Nov-11 18:49 | BFMedicine



RT @BFMedicine Testosterone suppresses prolactin levels #breastfeeding #MiamiABM <http://t.co/jh1cPErX>

04-Nov-11 18:49 | An\_armadillo



RT @BFMedicine PCOS associated with decreased #breastfeeding at 1 month <http://t.co/nG8UrWCq>  
#MiamiABM

04-Nov-11 18:49 | An\_armadillo



@bvc\_hengelo Meta-analysis: maternal obesity linked with decreased #breastfeeding initiation, duration #MiamiABM 1.usa.gov/vhbN49

04-Nov-11 18:36 | AnnetMulder



Eglash: not all obese women have problems with #breastfeeding #MiamiABM

04-Nov-11 18:35 | BFMedicine



Central obesity increases testosterone, which may affect #breastfeeding biology #MiamiABM

04-Nov-11 18:32 | BFMedicine



RT @BFMedicine: ABM founder Anne Eglash presenting on obesity and #breastfeeding #MiamiABM <http://t.co/i5coXAfF>

04-Nov-11 18:30 | as3pram



RT @BFMedicine: Winter: typically treat for candida as diagnosis of exclusion #breastfeeding #MiamiABM

04-Nov-11 18:30 | as3pram



RT @BFMedicine: Study: 27% of moms w/ nipple pain treated for candida actually had Raynaud's #breastfeeding #MiamiABM

04-Nov-11 18:30 | as3pram



RT @BFMedicine: If nipple eczema doesn't clear with cortisone, consider secondary staph, skin biopsy #breastfeeding #MiamiABM

04-Nov-11 18:29 | as3pram



RT @BFMedicine: Nipple psoriasis can look like eczema - look for plaques elsewhere to dx #breastfeeding #MiamiABM

04-Nov-11 18:29 | as3pram



RT @BFMedicine: Erosive adenomatosis: benign proliferation of lactiferous ducts, ex by biopsy #breastfeeding #MiamiABM

04-Nov-11 18:29 | as3pram



RT @BFMedicine: Lichen simplex chronicus: caused by scratching, gets better with cortisone #breastfeeding #MiamiABM

04-Nov-11 18:29 | as3pram



RT @BFMedicine: Paget's: typically unilateral, slowly advancing, resists tx #breastfeeding #MiamiABM

04-Nov-11 18:29 | as3pram



RT @BFMedicine: If eczema doesn't clear, combo of antibiotic and topical cortisone may do the trick #breastfeeding #MiamiABM

04-Nov-11 18:28 | as3pram



RT @BFMedicine: Staph is both a common colonizer and pathogen for atopic dermatitis #breastfeeding #MiamiABM

04-Nov-11 18:28 | as3pram



RT @BFMedicine: To diagnose atopic dermatitis of nipple, look for eczema elsewhere #breastfeeding #MiamiABM

04-Nov-11 18:28 | as3pram



RT @BFMedicine: Common causes of irritant dermatitis: soaps, laundry detergent, nipple pads #breastfeeding #MiamiABM

04-Nov-11 18:28 | as3pram





Winter: typically treat for candida as diagnosis of exclusion #breastfeeding #MiamiABM

04-Nov-11 18:06 | BFMedicine



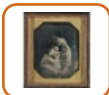
RT @BFMedicine: In US alone, there are 6.3 million google searches on #Breastfeeding every month #MiamiABM

04-Nov-11 17:49 | KimLiving



Study: 27% of moms w/ nipple pain treated for candida actually had Raynaud's #breastfeeding #MiamiABM

04-Nov-11 18:06 | BFMedicine



RT @BFMedicine: Staph is both a common colonizer and pathogen for atopic dermatitis #breastfeeding #MiamiABM

04-Nov-11 18:05 | Esme\_SageFemme



If nipple eczema doesn't clear with cortisone, consider secondary staph, skin biopsy #breastfeeding #MiamiABM

04-Nov-11 18:02 | BFMedicine



Nipple psoriasis can look like eczema - look for plaques elsewhere to dx #breastfeeding #MiamiABM

04-Nov-11 17:59 | BFMedicine



Erosive adenomatosis: benign proliferation of lactiferous ducts, ex by biopsy #breastfeeding #MiamiABM

04-Nov-11 17:58 | BFMedicine



Paget's: typically unilateral, slowly advancing, resists tx #breastfeeding #MiamiABM

04-Nov-11 17:57 | BFMedicine



Lichen simplex chronicus: caused by scratching, gets better with cortisone #breastfeeding #MiamiABM

04-Nov-11 17:56 | BFMedicine



If eczema doesn't clear, combo of antibiotic and topical cortisone may do the trick #breastfeeding #MiamiABM

04-Nov-11 17:55 | BFMedicine



Staph is both a common colonizer and pathogen for atopic dermatitis #breastfeeding #MiamiABM

04-Nov-11 17:54 | BFMedicine



To diagnose atopic dermatitis of nipple, look for eczema elsewhere #breastfeeding #MiamiABM

04-Nov-11 17:53 | BFMedicine



Common causes of irritant dermatitis: soaps, laundry detergent, nipple pads #breastfeeding #MiamiABM

04-Nov-11 17:52 | BFMedicine



Winter: eczema affects 2% of #breastfeeding moms #MiamiABM

04-Nov-11 17:51 | BFMedicine



Jonathan Winter speaking on dermatology of the breast #breastfeeding #MiamiABM

04-Nov-11 17:51 | BFMedicine



Lesson 5: this is a collaborative community #Breastfeeding #MiamiABM

04-Nov-11 17:16 | BFMedicine



Lesson 4: the call to action has started to be answered #Breastfeeding #MiamiABM

04-Nov-11 17:15 | BFMedicine



Lesson 3: #Breastfeeding support community is amazing and extensive #MiamiABM

04-Nov-11 17:14 | BFMedicine



In US alone, there are 6.3 million google searches on #Breastfeeding every month #MiamiABM

04-Nov-11 17:13 | BFMedicine



Lesson 1: there's reason to celebrate #Breastfeeding #MiamiABM

04-Nov-11 17:12 | BFMedicine



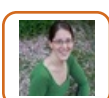
Comfort: my mom just became IBCLC and my dad drove the bus #MiamiABM #breastfeeding

04-Nov-11 17:09 | BFMedicine



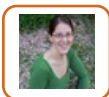
Ryan Comfort presenting lessons from the big pink bus <http://t.co/1zFylteo> #MiamiABM

04-Nov-11 17:08 | BFMedicine



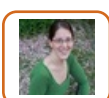
RT @BFMedicine: Groer: I don't say, "#breastfeeding is so protective for mothers." I say, "Formula feeding is so dangerous." #MiamiABM

04-Nov-11 16:58 | JeanetteIBCLC



RT @BFMedicine: Blood pressure declines over postpartum in #breastfeeding but not formula-feeding moms #MiamiABM

04-Nov-11 16:58 | JeanetteIBCLC



RT @BFMedicine: Depressive symptoms lower, fatigue higher in #breastfeeding women #MiamiABM

04-Nov-11 16:58 | JeanetteIBCLC



RT @BFMedicine: Groer: I don't say, "#breastfeeding is so protective for mothers." I say, "Formula feeding is so dangerous." #MiamiABM

04-Nov-11 16:54 | YemayaMa



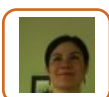
RT @BFMedicine: Groer: women who do not lactate are missing out on these protective effects #MiamiABM #breastfeeding

04-Nov-11 16:52 | YemayaMa



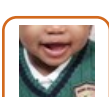
RT @BFMedicine: Maternal blood pressure association tied to body mass index #breastfeeding #MiamiABM

04-Nov-11 16:52 | YemayaMa



@MilkWhisperer following #miamiABM and sitting at the luncheon now

04-Nov-11 16:51 | linusknits



"@BFMedicine: Depressive symptoms lower, fatigue higher in #breastfeeding women #MiamiABM"<< AMEN on the fatigue!

04-Nov-11 16:49 | ifeedmilk4bb



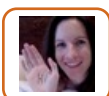
RT @BFMedicine: Groer: Formula feeding is the aberrant approach to feeding, with health risks for mom #breastfeeding #MiamiABM

04-Nov-11 16:40 | DoctorDrMILK



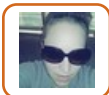
RT @BFMedicine: Groer: I don't say, "#breastfeeding is so protective for mothers." I say, "Formula feeding is so dangerous." #MiamiABM

04-Nov-11 16:37 | BestFeedYRBaby



Wow RT @BFMedicine: 30% of women w/ breast reduction cite poor support from provider as reason for not #breastfeeding #miamiabm

04-Nov-11 16:29 | HygeiaKate



Me too RT@HygeiaKate: Enjoying tweets from the Academy of #Bfing Medicine Conf. Love seeing MDs passion about supporting #bfing! #MiamiABM

04-Nov-11 16:25 | JennAbitbol



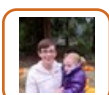
RT @BFMedicine: Groer: I don't say, "#breastfeeding is so protective for mothers." I say, "Formula feeding is so dangerous." #MiamiABM

04-Nov-11 16:15 | BreastfeedingNY



RT @BFMedicine: Groer: I don't say, "#breastfeeding is so protective for mothers." I say, "Formula feeding is so dangerous." #MiamiABM

04-Nov-11 16:14 | jeffianne



RT @BFMedicine: Groer: we are only mammals who choose whether to lactate #MiamiABM #breastfeeding

04-Nov-11 16:09 | jeffianne



RT @BFMedicine: Blood pressure declines over postpartum in #breastfeeding but not formula-feeding moms #MiamiABM

04-Nov-11 16:06 | LeighAnne625



RT @BFMedicine: Groer: women who do not lactate are missing out on these protective effects #MiamiABM #breastfeeding

04-Nov-11 16:05 | LeighAnne625



RT @BFMedicine: Groer: I don't say, "#breastfeeding is so protective for mothers." I say, "Formula feeding is so dangerous." #MiamiABM

04-Nov-11 15:58 | as3pram



RT @BFMedicine: Groer: I don't say, "#breastfeeding is so protective for mothers." I say, "Formula feeding is so dangerous." #MiamiABM

04-Nov-11 15:58 | MilkWhisperer



Any peeps at @BFMedicine conference? Tweet me if you're here! Or, follow along with me and others at #MiamiABM - live starting Sat. morn!

04-Nov-11 15:57 | MilkWhisperer



Groer: I don't say, "#breastfeeding is so protective for mothers." I say, "Formula feeding is so dangerous." #MiamiABM

04-Nov-11 15:56 | BFMedicine



RT @BFMedicine: Groer: Formula feeding is the aberrant approach to feeding, with health risks for mom #breastfeeding #MiamiABM

04-Nov-11 15:51 | as3pram



RT @BFMedicine: Groer: women who do not lactate are missing out on these protective effects #MiamiABM #breastfeeding

04-Nov-11 15:51 | as3pram